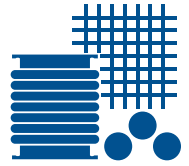


# BFM® APPLICATIONS- OVER PRESSURE



BFM® fittings are probably the most pressure resistant form of flexible connector available in the world.

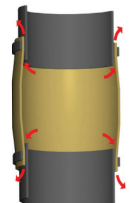
Traditional connectors, and particularly clamp bands, are prone to failure as pressure within the sleeve increases. They are also prone to continuously leaking product and create a messy and un-hygienic environment. The BFM® connectors internal seal has been independently tested and is proven to withstand far higher pressures without leakage. In fact the higher the pressure the tighter the BFM® fitting seals.

## What pressure will they handle?

There are a huge range of variables that will affect the performance of a BFM® fitting in an over pressure application. Consideration must be given to the diameter and length of the connector, the product, the amount of movement in the connection point and the temperature.

### Traditional Connector

Internal Pressure pushes Connector away from the Spigot with dust leaking.



### Product Build Up

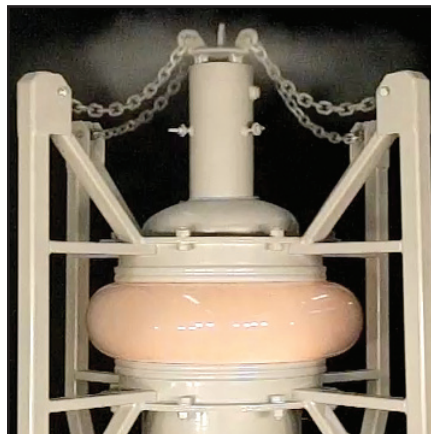
There is a contamination point with conventional connectors which is a hygiene risk.

### BFM and a Perfect Seal

Increase the pressure and the tighter the BFM connector fits. No leaks and no mess.



Water Testing



Explosion Testing



Over Pressure Dryer Wash

There are now thousands of connectors working in over pressure situations in the market place around the world. The BFM® Seeflex 040E connector is also tested to contain the pressures of explosions of 60Kpa, and over 100Kpa with a Kevlar cover. BFM® Global can supply independent results on request.