



Hi-Flex Rubber Compound Hoses

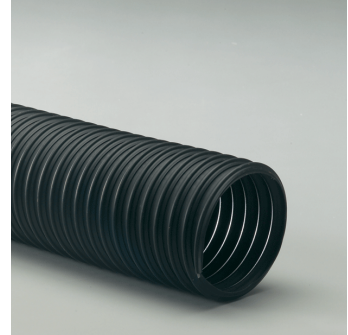
BR

Medium weight thermoplastic rubber hose reinforced with a spring steel wire helix.

LENGTHS	SIZES	COLORS	TEMPATURE RANGE
25', 50'	1.5" THROUGH 24" *	BLACK	-60° TO 275° F -51° TO 135° C

APPLICATIONS

- Good abrasion resistance.
- Excellent chemical resistance.
- Great moisture and UV resistance.
- Designed for applications with wide temperature ranges.
- Smooth interior assures minimal friction loss and efficient air flow.
- Wall Thickness = .030"
- Available with factory-installed 2" soft cuffs.



INSIDE DIAMETER (IN)	APPROX. WEIGHT (LBS/FT)	WALL THICKNESS (IN)	CL BEND RADIUS (IN)	COMPRESSION RATIO	NEGATIVE PRESSURE (IN/HG)	WORKING PRESSURE (PSI)
2	.25	.025	2	2:1	29	19
3	.4	.030	3	2:1	29	11
4	.67	.030	5.5	2:1	29	9
5	.85	.030	6.5	2:1	17	8
6	.82	.030	6	3:1	11	7
7	.95	.030	7	3:1	9	5
8	1.2	.030	8	3:1	5.5	4.5
9	1.7	.030	9	3:1	10	4
10	2.2	.030	10	3:1	6.5	4
12	2.7	.030	12	3:1	5	3.8
14	3	.030	14	3:1	3	3.2
16	3.5	.030	16	3:1	2.3	2.6
18	3.9	.030	18	3:1	2	2.3
20	4.3	.030	21	3:1	1.5	2
22	4.4	.030	23	3:1	1	1.9
24	4.8	.030	25	3:1	.8	1.75

* FURTHER DIAMETERS AND LENGTHS AVAILABLE ON REQUEST.



SCAN FOR PRODUCT INFORMATION

DISCLAIMER: THE DATA PROVIDED IS INTENDED AS A GUIDE ONLY AND SHOULD NOT BE INTERPRETED AS A WARRANTY. IT IS NOT INTENDED TO BE USED TO DETERMINE THE SUITABILITY OF THE PRODUCT FOR ANY SPECIFIC CUSTOMER APPLICATION. SIFTEX STRONGLY SUGGESTS THAT EACH CUSTOMER THOROUGHLY TEST THE PROSPECTIVE PRODUCT IN THEIR OWN MANUFACTURING FACILITY TO DETERMINE THE ACTUAL SUITABILITY OF THE PRODUCT IN THEIR SPECIFIC APPLICATION.

